

DRAWING NUMBER
50/133

133

HOMES OF LEE'S CROSSING PLAT NO. 7

A P.U.D.

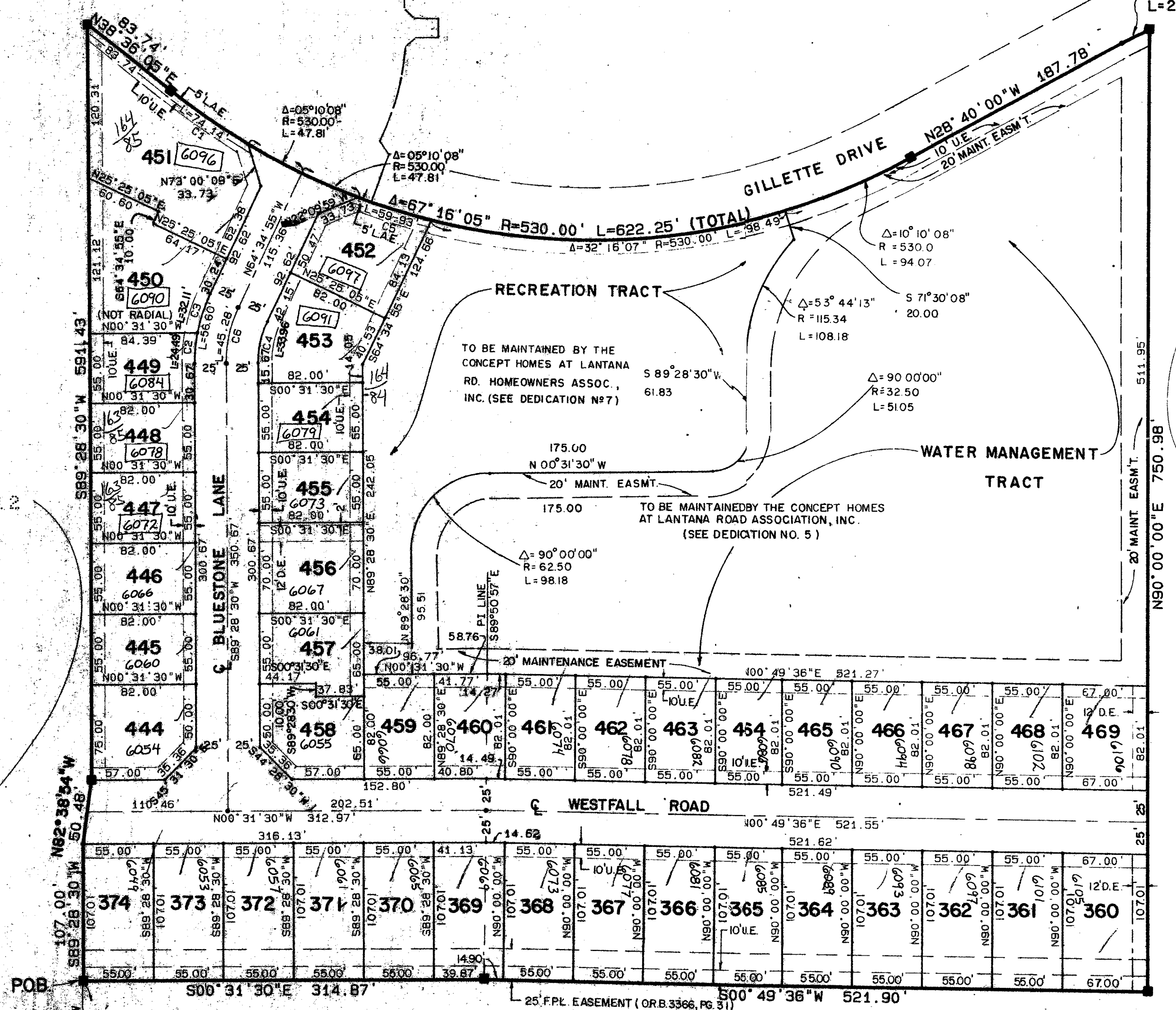
SITUATE IN SECTION 34, TOWNSHIP 44 SOUTH, RANGE 42 EAST, PALM BEACH COUNTY, FLORIDA, BEING A REPLAT OF A PORTION OF LEE'S CROSSING PLAT NO. 2 (P.U.D.), AS RECORDED IN PLAT BOOK 42, PAGES 1 THROUGH 5, OF THE PUBLIC RECORDS OF PALM BEACH COUNTY, FLORIDA,
SHEET 2 OF 2.

STATE OF FLORIDA
COUNTY OF PALM BEACH
THIS PLAT WAS FILED FOR
RECORD AT
THIS DAY OF
AD, 1985 AND ONLY RECORDED
IN PLAT BOOK 42, PAGES
AND
JOHN B. DUNKLE, CLERK
CIRCUIT COURT
BY: D.C.

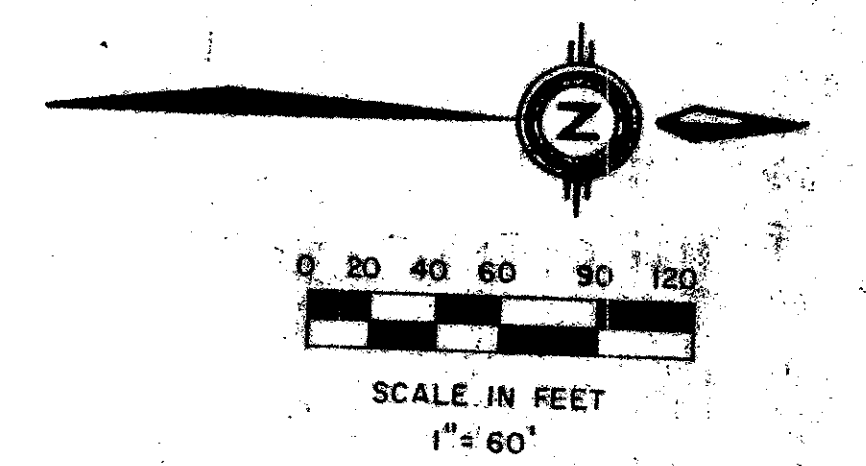
HOMES OF LEE'S CROSSING
PLAT NO. 1
(P.B. 46, PGS. 85-87)

HOMES OF LEE'S CROSSING PLAT NO. 3
(P.B. 47, PGS. 137-139)

$\Delta=03^{\circ}44'05''$
 $R=370.00'$
 $L=24.12'$



NO.	DELTA	RADIUS	LENGTH
C1	8°00'52"	530.00	74.14
C2	11°13'32"	125.00	24.49
C3	14°43'03"	125.00	32.11
C4	25°56'35"	75.00	33.96
C5	6°28'43"	530.00	59.93
C6	25°56'35"	100.00	45.28



LEE'S CROSSING PLAT NO. 2
(P.B. 42, PGS. 1-5)

HOMES LEE'S CROSSING PLAT NO. 4
(P.B. 48, PGS. 142-143)

up 11/2/85
24/4/42
DEDICATION to Homes of Lee's Crossing
BOOK 50 PAGE 133
PLAT NOTE B PLAT MAP 170A
CARD # 33 ZONE RS
BE YES ZIP CODE 33437
PUB NAME Homes of Lee's Crossing Plat
Unit 7

P.U.D. TABULAR DATA

TOTAL ACRES	12.22	AC.
TOTAL UNITS	41	
GROSS DENSITY	3.35	DU/AC
BUILDING COVERAGE	2.41	AC.
STREETS & UNCOVERED PARKING	1.54	AC.
WATER BODIES	5.44	AC.
TOTAL OPEN SPACE	8.27	AC. 67%

UNPLATTED

0271-306
50/133

Meridian Surveying and Mapping Inc. WEST PALM BEACH, FLORIDA

DRAWN	M.E.H.	DATE	FEB 1984
CHECKED		SCALE	1"=60'
DRAWING NO.	84-P-008	HOMES OF LEE'S CROSSING PLAT NO. 7	